



# FAHEYS PIT NEWSLETTER

## July 2022

### Overview

The Sheridan family have a long history of association with the Dorrigo Plateau, having farmed land for decades and, since the last 10 years, operated a quarry at Hernani, operated by Sheridans Hard Rock Quarry Pty Ltd, which has 20 full-time employees. Faheys Pit was recently purchased by the Sheridan family.

A quarry was originally approved at Faheys Pit in 1995, in conjunction with the neighbouring pit operated by Council (Ellis' Pit). The Sheridan family intend to lodge a development application with Clarence Valley Council seeking consent for the continuing operation of Faheys Pit, expanding it in order to meet customer and market demands, including planned road upgrades works planned for Armidale Road.

### Faheys Pit Quarry Continuation Project

The Sheridan family seek to enable the continuation of quarrying at Faheys Pit (Project Site) with the following changes:

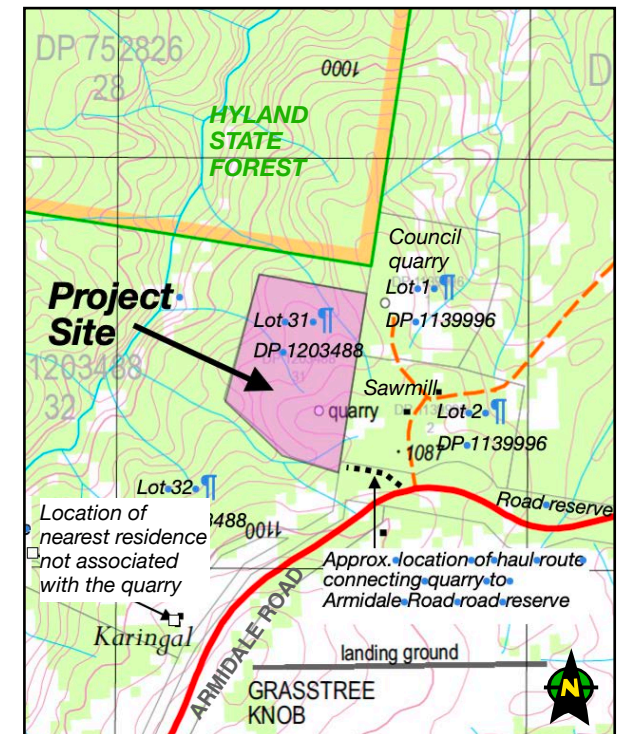
- **Extraction rate:** Increase the fixed annual tonnage limit to 150,000 tonnes per annum.
- **Product transport:** Allow up to a maximum of 60 loaded trucks per day using the existing access to Armidale Road.
- **Quarry footprint:** Allow expansion of quarry footprint, generally over currently cleared areas on site.
- **Hours of operation:** Limited to 7.00am to 6.00pm Monday to Friday (ie. 11 hours operation per day) and 7.00am to 1.00pm on Saturdays (ie. 6 hours operation). Hours of blasting are to be restricted to 9.00am to 3.00pm Monday to Friday.
- **Quarry life:** Extend the approval for quarry operations for up to 20 years, to 2042.

### EIS Assessment Process Now Underway

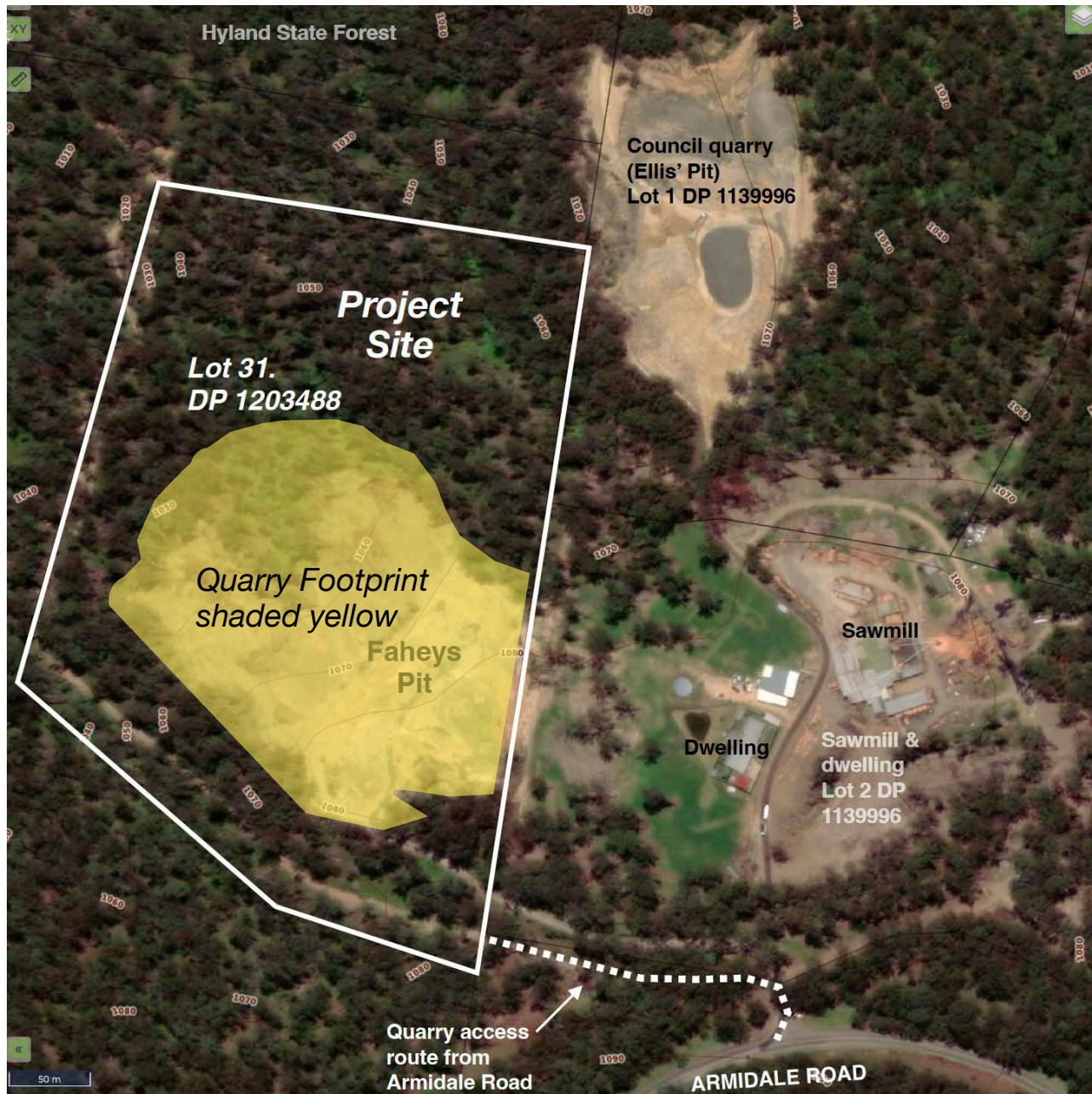
The Sheridan family has engaged town planning consultants Outline Planning Consultants Pty Limited (OPC) to prepare an Environmental Impact Statement (EIS) in support of the Project, including detailed technical reports assessing the potential environmental, social, cultural and economic impacts (and benefits) of the Project.

These investigations are well underway, with the following completed assessments:

- **Contamination:** No contamination potential, save for need to remove discarded material encountered on the site from earlier quarry workings.
- **Aboriginal sites:** No sites found, with a low probability of finding any sites.
- **Noise:** Noise monitoring now completed.
- **Roads and traffic:** Initial site investigations carried out.







Preliminary Design of Quarry  
Seek EIS Specifications



Prepare EIS

← We are here



Lodge EIS, Public Exhibition



Assessment of EIS



Determination of DA

## HOW TO CONTACT US

For further information on the Project:

The Sheridan family welcomes enquiries from interested neighbours and landowners.

Contact Graham Sheridan on:  
02 6657 6088 (Hernani quarry office)  
or by email [shrquarry@bigpond.com](mailto:shrquarry@bigpond.com)